

INFO SHEET

Rust stains and pool resurfacing

Some concrete pools show red – brown stains on the surface. These maybe due to leaves, bottle tops etc or rusting reinforcing steel. To determine which you have rub the area with some sandpaper. If the stain starts to disappear then it's a surface stain and of little interest. However, if the stain continues to develop and grow more as you rub into the surface, then it's most likely coming up from below. This indicates the reinforcing steel in the concrete is corroding. (See the pictures below) Cracks (hairline) can let pool water into the concrete and create problems.

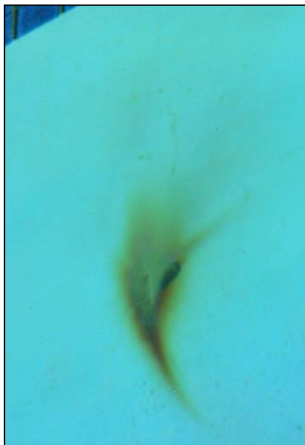
Water (ground) can also be coming from below though porous concrete.

Ideally all concrete pools will have at least 2 inches of concrete cover over steel reinforcement bars to prevent corrosion from occurring, however this is not always achieved at the time of installation. Also, some areas of concrete may not be compacted enough allowing water to pass slowly through the concrete, causing corrosion of the steel.

Such surface signs indicate that work is needed to treat this as left unattended it will result in further and more costly damage. Simply painting over it will not stop the corrosion developing further and it will break through the new paint.

The rust needs to be completely removed from the steel before the concrete cover is re-established.

Where this rust has reappeared could indicate it was not completely removed previously or that moisture is still penetrating the protective coating.



General surface rust stains



Crack with rust stains.



Check the metal plate above skimmer box



*What you may see once you start digging into the rust spot. On closer inspection it can be seen that the rust is all around the steel and the concrete needs to be dug out completely and rusty steel exposed on **ALL** sides. Vital!*



It's vital to dig all concrete away from rusted steel and expose it. Then wire brush all loose rust off. Once back to sound steel, apply an oil based anti-corrosive primer or a kelate (rust converter). These are available from all good paint shops.



Then refill voids with a sand cement mix. It may require 2 or 3+ applications 1 – 1.5 inch thick, to build back to original surface. To prevent shrinkage use a 3 : 1 washed sand to cement mix (or a propriety mix) and cure correctly by keeping moist for several days in hot weather. You can smooth off the final surface to match adjoining areas.

The finished surface which now blends in with nearby areas, is ready for coating with PaintNForget system.

Done well and with all the rusted reinforcing steel exposed, treated and recovered there should be no more corrosion from this area. It does not mean that corrosion is stopped anywhere else. This maybe happening but has not yet broken through. By coating the pool with PaintNForget any such corrosion maybe reduced in its rate of activity.

Note that ground water may also cause corrosion from the other side.

If you have a saltwater pool, it's important that this salty pool water is kept separate from the steel and using an impervious long-lasting coating like PaintnForget will greatly assist in this matter.



For more details, please see the Preparation and Application Notes for PaintNForget and if in doubt contact us for further assistance.

PaintNForget US Operations

Phone: 321 3105346 Web: paintnforget.com Email: info@paintnforget.com

All information is given in good faith but without warranty. No liability will be accepted for any damage, loss or patent infringement from use of this information. This information does not constitute a specification and is subject to modification in the course of further development